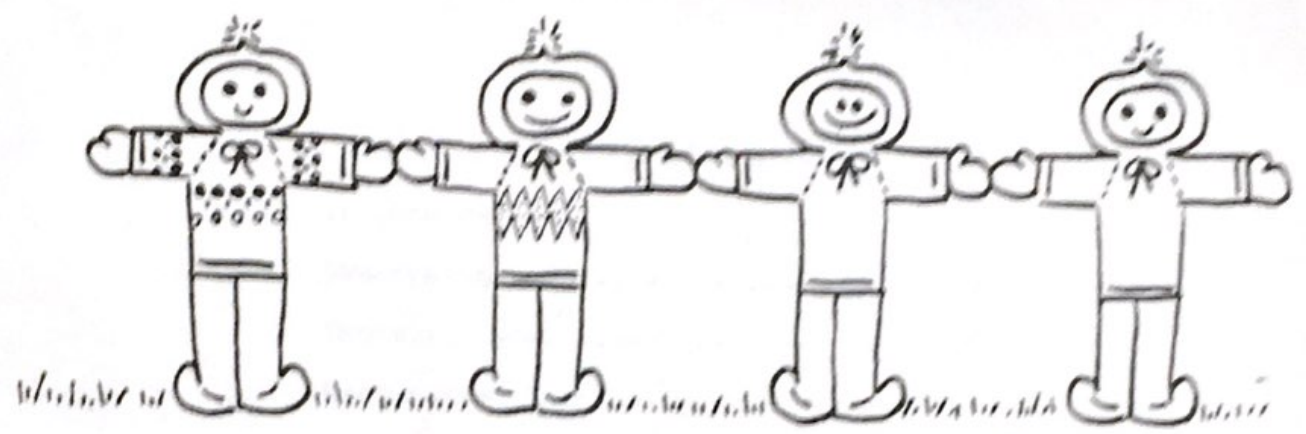


Standard

5/20

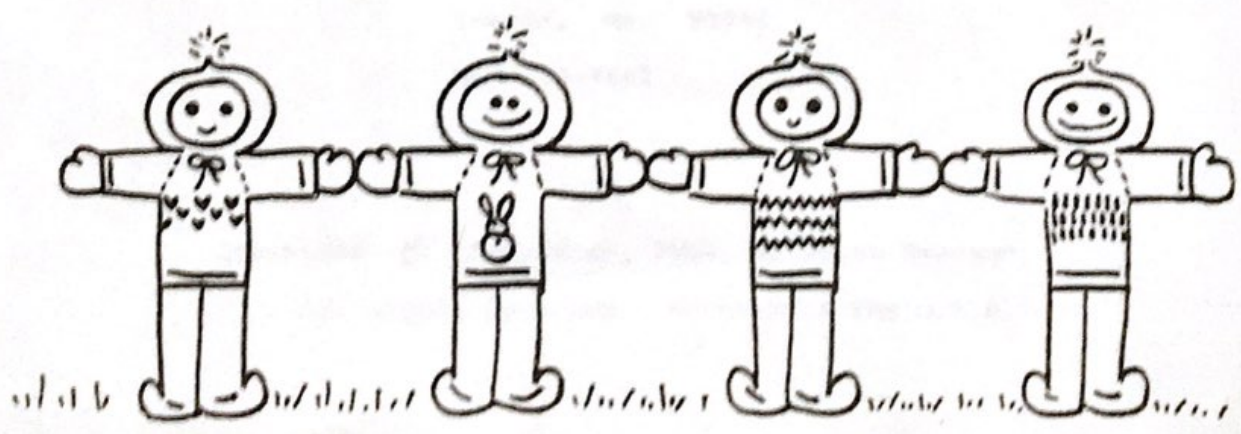


# EASY & QUICK

## Childrens Hooded Sweater

- simple for beginners
- knit upside down
- sizes 1 to 10

BY Diane Swanson



## TABLE OF CONTENTS

### General Information

|                               |   |
|-------------------------------|---|
| Description.....              | 1 |
| Abbreviations.....            | 1 |
| Measurement Chart.....        | 1 |
| Yarn - Type and Amount.....   | 1 |
| Stitch Gauge and Tension..... | 1 |

### Written Instructions

|                |   |
|----------------|---|
| Hood.....      | 2 |
| Back.....      | 3 |
| Front.....     | 3 |
| Sleeve.....    | 4 |
| Finishing..... | 4 |

### Diagrams

|                 |   |
|-----------------|---|
| Sizes 1-6.....  | 5 |
| Sizes 7-10..... | 6 |
| Graphs.....     | 7 |

For more information or questions please contact.....

The Calico Cottage  
208 S. Mantorville Ave.  
Kasson, Mn. 55944  
507-634-4443

Copyright © September, 1984 by Diane Swanson

All rights reserved. Printed in the U.S.A.

## Description

The children's hooded sweater in this leaflet is very quick and easy to make. It is knit from the top down. The hood is knit first and then hung back on the machine to complete the front, back, and sleeves. Both written instructions for the beginner and diagrams for the more experienced knitter are included in five sizes from 1-10. You will also find some graphs to be punched or marked on your mylar sheet. The design possibilities are unlimited - so be creative and enjoy!

## Abbreviations

|        |   |                           |
|--------|---|---------------------------|
| C.O.   | - | Cast On                   |
| e.o.n. | - | Every Other Needle        |
| R.C.   | - | Row Counter               |
| Inc.   | - | Increase                  |
| W.P.   | - | Work Position             |
| ( )    | - | ( Larger sizes in order ) |

## Measurement Chart

| Size                           | 1-2   | 3-4   | 5-6    | 7-8    | 9-10  |
|--------------------------------|-------|-------|--------|--------|-------|
| Chest                          | 23    | 25    | 27     | 28     | 29    |
| Sleeve length<br>from underarm | 7 1/2 | 9 1/2 | 11 1/2 | 13 1/2 | 14    |
| Body length<br>from underarm   | 7 1/2 | 9 1/2 | 10     | 11 1/2 | 12    |
| Amt. of Yarn                   | 5     | 6     | 7      | 8 1/2  | 9 1/2 |

## Yarn

Trenzado or any yarn that knits to gauge

## Gauge

7 stitches and 10.5 rows per inch

## Tension

Tension 8 on Brother machine



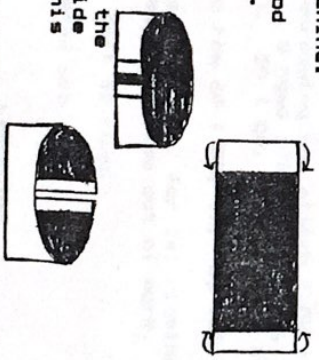
BACK

- \* Hang the center 30 ( 32, 34, 34, 36 ) sts. on the center 26 ( 28, 30, 30, 32 ) needles making sure the wrong side is facing you.
- \* R.C.000. Main tension (8).
- \* Push out one NEW needle on the carriage side and knit across. Push out one NEW needle on the carriage side and knit back. Continue in this manner until the row counter reads 56 ( 60, 64, 72, 78 ). Carriage on right. 82 ( 88, 94, 102, 110 ) stitches.
- \* R.C.000. Knit 60, ( 76, 86, 90, 100 ) rows.
- \* Transfer to e.o.n. for 1x1 ribbing. Be sure to push all empty needles out of work.
- \* R.C.000. Tension 4, knit 30 rows.
- \* Hang hem and bind off.

FRONT

( Shaded areas of diagrams represent wrong side of work )

- To hang the front on the machine:
- \* Fold the edges of the hood over to the casing lines.
- \* Bring the folded edges together.
- \* The hood will be hung on the machine with the wrong side facing you as shown in this diagram.
- \* Hang the two sets of 5 scrapped of sts. on the center 10 needles.
- \* Now hang the next 9 ( 10, 11, 11, 12 ) scrapped off sts. on the next 8 ( 9, 10, 10, 11 ) needles on each side. The bound off sts. are beneath the center 10 needles.
- \* Follow the same knitting instructions as the back.



## SLEEVES

- \* Hang the 12 ( 14, 16, 16, 18 ) scrapped off sts. on center 8 ( 10, 12, 12, 14 ) needles, making sure the wrong side is facing you.
  - \* Hang 28 ( 30, 32, 36, 39 ) loops from the sweater <sup>top</sup> front on the needles next to those you just hung.
  - \* Repeat on the opposite side with the back loops.
  - \* 64 ( 70, 76, 84, 92 ) needles should now be in work.
  - \* Push the HOLD button. Push all the needles EXCEPT the center 8 ( 10, 12, 12, 14 ) to HOLD position.
  - \* Beginning with the HOLD sts. nearest to those in work, push back into working position the first HOLD needle on the CARRIAGE SIDE. Thread the carriage and pull the yarn over the needles in HOLD. Knit to the left.
  - \* Keep pushing back one new needle on the CARRIAGE SIDE each row until all the needles are back in work.
  - \* R.C.000.
  - \* Knit even decreasing one stitch EACH side every 8-rows: 7x ( 8 rows 10x, 10 rows 9x, 9 rows 10x, 10 rows 12x ). 50 ( 50, 58, 64, 68 ) sts. remain.
  - \* Knit even to row 60 ( 80, 92, 98, 120 ).
  - \* Transfer sts. to e.o.n. for 1x1 ribbing. Be sure to push the empty needles out of work.
  - \* Tension 4. Knit 40 rows.
  - \* Hang hem. Bind off.
- FINISHING
- \* Sew underarm seams
  - \* Kitchener stitch the center top hood seam.
  - \* Whip stitch the edge of the hood to the casing line.
  - \* Make a 4 stitch cord 3 or 4 feet long. Slip this through the casing tunnel on the hood.

DIAGRAMS  
 Sizes 1-2 (3-4, 5-6)

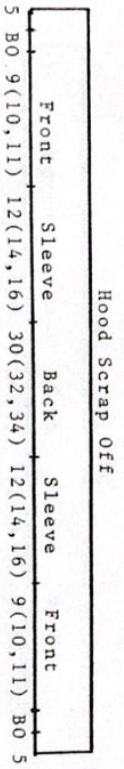
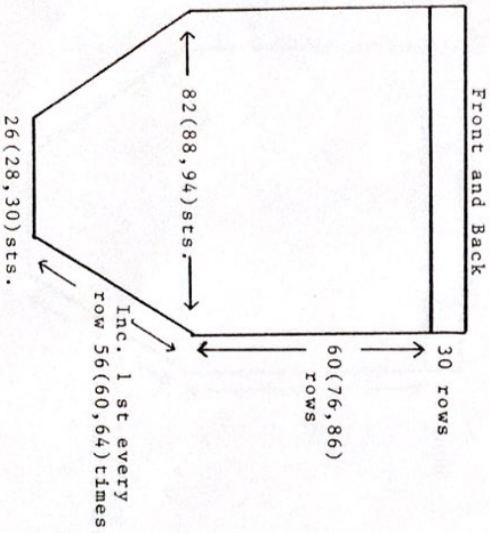
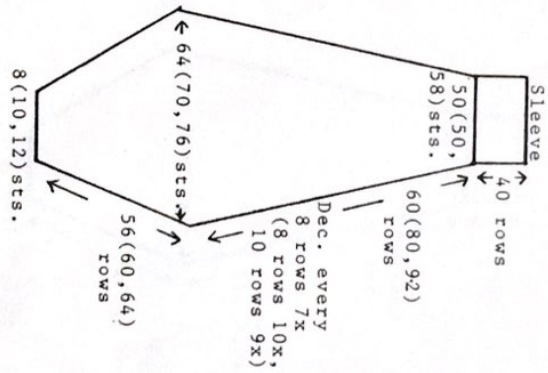
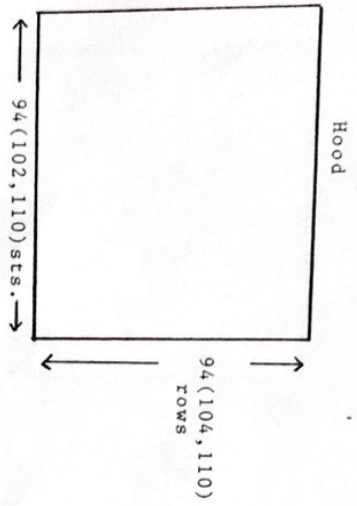
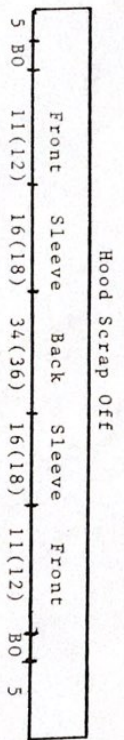
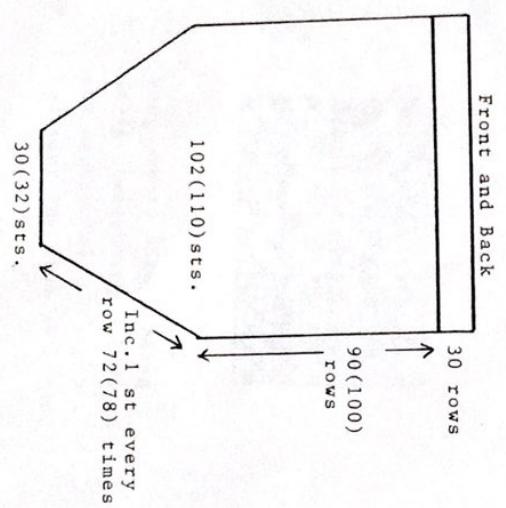
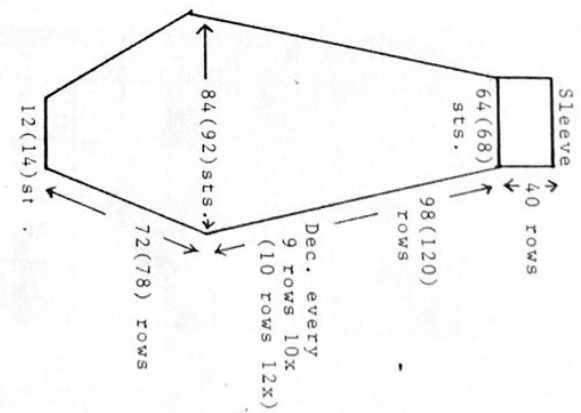
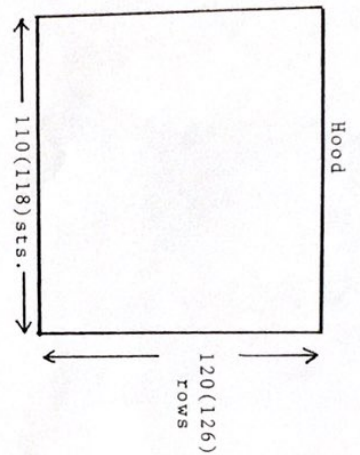
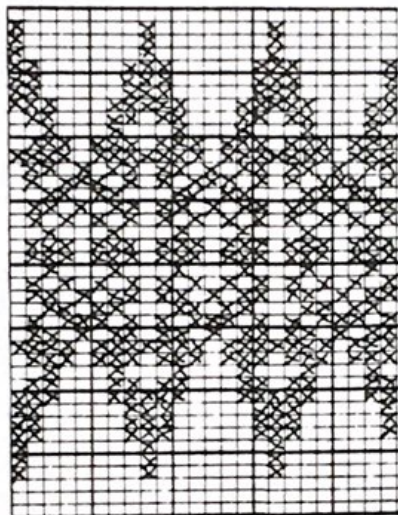
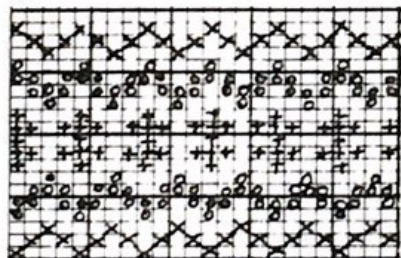


Diagram  
 Sizes 7-8 (9-10)

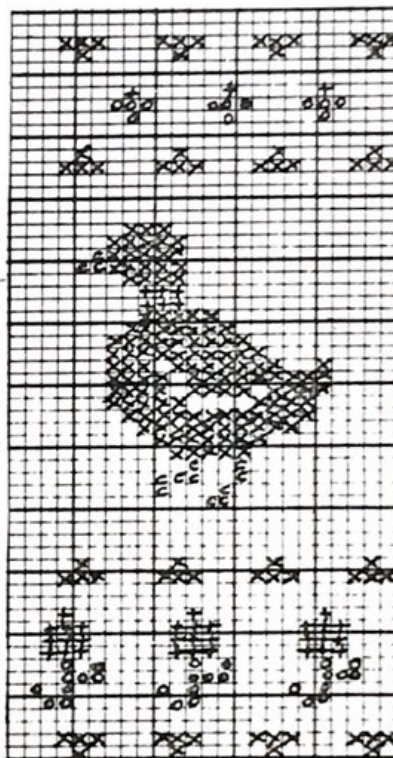




After 18 rows, reverse the two yarns in the carriage.



Very pretty border using three contrasting colors on one background. Try pink, lavender and blue on white.



X white  
 O green  
 + red or bright pink  
 C yellow

Try a royal blue background  
 Duplicate stitch 3 stitches on the beaks.